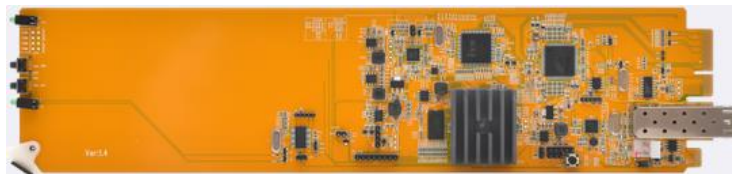


# OpenGear OGX Frame

## UDP2000-HDMI OGX Transmitter



### UDP2000-HDMI OGX Features

The UDP2000P-HDMI-OGX KVM transmitter provides perfect High Definition Video up to 4K @ 30Hz at approximately 100~150m with USB keyboard & mouse, two spare USB2.0 ports, Audio, RS-232 and IR remote control.

Video connectivity is through HDMI (DVI-D connectivity option with HDMI-DVI adaptor cable) on the transmitting side with local HDMI loop out port, with HDMI (DVI-D connectivity option with HDMI-DVI adaptor cable) support on the remote user side.

This digital extension solution is a hot swappable OGX 3.0 card based module using standard UDPIP technology allowing unicast (point-to-point) or multi-cast (one-to-many) through a 1Gig Ethernet switch.

Based on the OGX format, currently 10 x UDP2000P-HDMI-OGX KVM transmitter cards can be housed within a OpenGear OGX frame.

#### ICP GLOBAL PTY LTD

## Features

- OpenGear 3.0/X card-based form factor
- Optional Dashboard control enabled
- 10 cards can fit into an OpenGear OG-X frame
- Fibre based Gigabit Ethernet: copper output through SFP-RJ45 module
- MM Fibre - support up to 550m (OM2/OM3), SM Fibre - Supports up to 10 km
- Copper - 170 meters point to point extension with CAT6 cable
- Copper - 100 meters when used with a GigE switch
- Supports point-to-point Unicast, multi-to-multi Multicast
- Supports bi-directional stereo audio; embedded HDMI and external stereo input
- Supports RS-232 communication between Tx and Rx
- Optional Dashboard Control: Built-in webpage for configuration
- Optional Dashboard Control: Connection manager software for Tx/Rx management
- UDP2000-HDMI OGX
- Supports resolutions up to 3840x2160@30Hz
- Advanced EDID management functionality, built-in EDID, EDID pass through, copy EDID and sharing EDID
- Built-in scaler on the receiver for Video-Wall
- Plug and play and hot swappable cards

		UDP2000-HDMI OGX
Video	Input	HDMI
	Output	HDMI Loop out + SFP (Fibre or copper)
Audio	Input	2 of the 4 pin phoenix connector
	Output	2 of the 4 pin phoenix connector
USB	Tx Side	USB Type B (Female)
System Link	Output	SFP (Fibre or copper)
RS-232 Baud Rate		2 of the 4-pin Phoenix connector up to 115,200 bps, full duplex
Video Resolution		Up to 3840x2160@30Hz
Interconnect Cable		Standard CAT6/CAT6a/CAT7 network cable, single mode fiber or multi-mode fiber (OM2/OM3)
Maximum Copper Cable Length		170m point-to-point, 100m when connected to a switch
Maximum Fiber Cable Length		10 km on Single mode, 550m on multi-mode cables

**NOTE:** refer to UDP2000-HDMI Receiver User Station and UDP2000-DVI Receiver User Station datasheets for user station connectivity.

<https://www.icpglobal.net.au/shop/category/kvm--av-solutions/kvm-extenders/6894>

### ICP GLOBAL PTY LTD

SUITE 603, LEVEL6 ❖ EASTGARDENS OFFICE TOWER ❖ 152 BUNNERONG ROAD ❖ EASTGARDENS NSW 2036  
 TEL: (02) 9314-2092 ❖ FAX: (02) 9344-9537  
 Web <http://www.icpglobal.net.au>